



## Nursery Geese Summer 1 Newsletter

Welcome back to Summer 1!

**We hope you have had a wonderful break and are ready for an action-packed half term!**

### The EYFS Curriculum

There are 7 areas of the EYFS curriculum which we cover in our indoor and outdoor provision. These areas are:

#### Prime Areas

- Communication and Language
- Personal, Social and Emotional Development
- Physical Development

#### Specific Areas

- Literacy (writing/reading)
- Maths
- Understanding the World
- Expressive Arts and Design

Our learning this half term is based around the topics: **Minibeasts** and **Planting and growing**.

In the first three weeks we will explore the topic of minibeasts, we will be looking at what minibeasts are, where they live and what they eat. We will also be looking at the lifecycle of some minibeasts - butterflies and spiders.

In the other half of the term we will be exploring plants and growing. We will be planting our own seeds and learning how to look after flowers. We will be asking questions such as what do flowers eat? What do they drink? How much space do they need to grow? We will also look at our own garden and tend to the flowers in it.

### Key dates for your diary:

Monday 13th April EYFS Coffee Morning 11.45-12.45pm

Friday 24th April 8.45-9.30 and 12.45-1.15 Geese and Ducks  
Family Friday

Monday 4th May Bank Holiday - Gainsborough closed

Friday 8th May 8.45-9.30 and 12.45-1.15 Geese and Ducks  
Family Friday

Monday 18th May Walk to School Week

Friday 22nd May Wear stripes for World Bee Day

Friday 22nd May 8.45-9.30 and 12.45-1.15 Geese and Ducks  
Family Friday

Friday 22nd May Gainsborough's Got Talent! 3.30-5.30pm

Friday 22nd May Last day of Summer 1

Monday 25th May Bank Holiday

Tuesday 26th - Friday 29th May Under 5 Holiday Camp

Monday 1st June Summer 2 begins

Friday 17th July Last day of Summer 2

Monday 20th July INSET day all staff

## Family Friday

We would like to invite you into our class to do activities with your child from 8:45-9:30am or 12:45-1:30 every other Friday.

Our Family Friday dates for Geese are:

**24th April** 8:45-9:30 and 12:45-1:30 - All about minibeasts!

**8th May** 8:45 - 9:30 and 12:45-1:30 come and plant your own seed

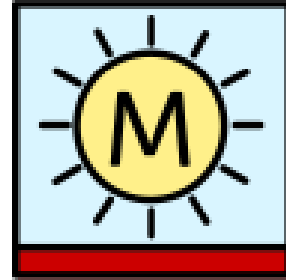
**22nd May** 8:45-9:30 and 12:45-1:15 All about plants!



## PE

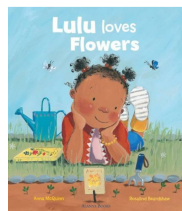
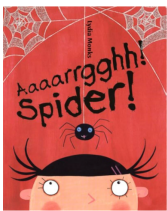
Class PE Day: **Monday**

Please ensure that your child comes to school wearing their PE kit on **Mondays**



## Reading

Our core texts for this term are:



The key vocabulary for Aaaaargh! Spider! are: spider, pet, alone, family, scared, arachnid, eight legs.

The key vocabulary for Lulu loves flowers are: research, flowers, plants, gardening, green, library, seeds, water, watering can.

### Book packs

We will be giving out reading book packs to children and families to read at home. This includes activities relevant to the story that supports children's writing and communication skills. Each book pack will be given out **every Friday** and should be returned on the following **Tuesday**.

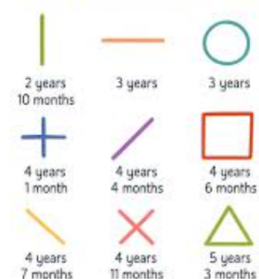
## Writing

We will have mark making opportunities in different areas of the provision. We will explore using different tools to make marks and begin to give meaning to them.

Our mark making opportunities will continue to focus on making discernible, purposeful and intentional marks such as writing letters for our names and drawing familiar people and places. We will do this using a variety of tools i.e. pens, crayons, pencils and chalk.

A good way to practice mark making at home is to have lots of fun and practice lots of different types of pre school marks such as :

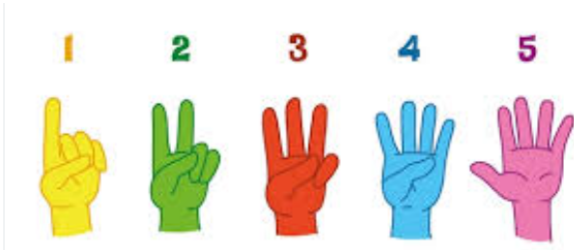
### PRE-WRITING SHAPES



## Maths

For this coming half term we will learn to:

- Show finger numbers up to 5
- Count objects in a line to 5
- understand positional language using words alone i.e. 'in' 'on' 'under'
- explore capacity and make comparisons between objects relating to capacity.
- anticipate times of the day - such as hometime and mealtimes
- understand some talk about immediate past and future
- describe a series of events using words such as 'first,' 'next' 'last.'



## Forest School

Forest School is a fantastic opportunity to learn outdoors. Children will need to come to school in suitable clothing as we learn the skills needed to be safe and successful at Forest School.

**Forest School will take place from: 15th April 2026**

Children will need wellington boots and puddle suits, our sessions will be every **Wednesday morning**.



## Junk modelling and loose parts

We use a lot of natural resources in our play to provoke imagination and we would appreciate your help with recycling items for our junk modeling sessions, such as: water bottles, cardboard boxes, or any loose part items such as lids, corks, pinecones, pebbles and shells.



## Useful information

- Water bottles: Children do not need to bring a water bottle to school as we provide individual bottles in class.
- Label uniforms and spare clothes: Please provide a spare change of clothes for your child and label the uniforms.
- Clubs
  - Breakfast clubs 8.00-8.45
  - After school clubs 3.45-5.00
  - Playcentre 5.00-6.00

Please come and speak with us if you have any questions or concerns and we look forward to working with you all.

[Visit our website for dates, news and other information](#)